

PHILIPS

sense and simplicity

Smart CFL-ni EM Downlight

-A family of Commercial Lighting Center Series

APR Marketing
Sonny Qiu

Apr, 2010



Application

- *Basic lighting*
- *Commercial places, public areas, corridors*

Main features

- *Safe and durable*
- *Easy to install*
- *Professional visual appearance*

- *1 x 10W/13W/18W, 2x13W/18W/26W*
- *4", 5", 6", 8"*
- *EM, EL*
- *Fogy class optional*



CFL Features

-Durable and Safe

Compliant with IEC60598 and CCC
Robust design means more durability

-Easy to install

Specially designed clips for easy installation

-Professional visual appearance

Attractive designs that are pleasing to the eyes

Smart CFL-ni Downlight

- 3 cut-out sizes
- 6 watt configurations
- 2 types of gears
- with (EL only) and without glass

FBH030

FBH031

FBH031

FBH031

FBH032

FBH033

1x10w

1x13w

2x13w

1x18w

2x18w

2x26w

EM



EL



EL
w/ FG



Frosted Glass version (see “FG” in Prisma Description)

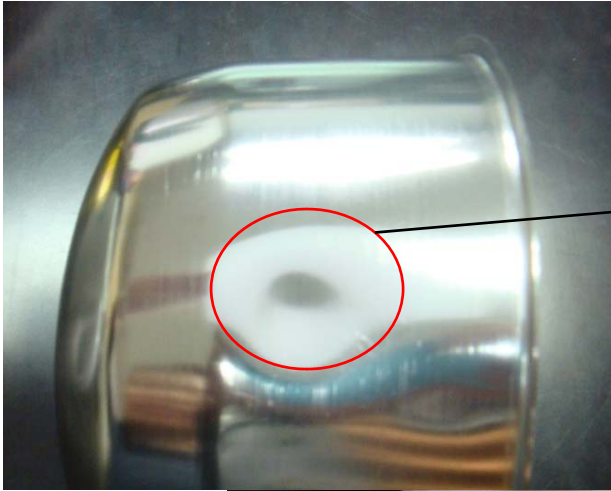


Frosted glass reduces glare effect, providing comfort ability

Chain attached, to save one hand during changing the lamp

**Only Electronic version
CFL-ni DL has FG option**

Benchmark (vs. NVC)



Reflector too thin. It distorts easily



NXX: tw105
PHILIPS: tw130



No fixation on wire connection. Danger !

Order Info

	Lum description	Lamps	Height (mm)	Cutout (mm)	Net weight (KG)
1	FBH030 1xPL-C/2P10W I WH	PL-C 10W/2P	99	130	0.77
2	FBH031 1xPL-C/2P13W I WH	PL-C 13W/2P	100	160	0.84
3	FBH031 1xPL-C/2P18W I WH	PL-C 18W/2P	100	160	0.84
4	FBH031 2xPL-C/2P13W I WH	PL-C 13W/2P	100	160	1.19
5	FBH032 2xPL-C/2P18W I WH	PL-C 18W/2P	100	175	1.24
6	FBH033 2xPL-C/2P26W I WH	PL-C 26W/2P	136	245	1.85
7	FBH030 1xPL-C/4P10W EL WH	PL-C 10W/4P	92	133	0.73
8	FBH031 1xPL-C/4P13W EL WH	PL-C 13W/4P	91	160	0.81
9	FBH031 1xPL-C/4P18W EL WH	PL-C 18W/4P	91	160	0.81
10	FBH031 2xPL-C/4P13W EL WH	PL-C 13W/4P	91	160	0.83
11	FBH032 1xPL-C/4P18W EL WH	PL-C 18W/4P	87	175	0.95
12	FBH032 2xPL-C/4P13W EL WH	PL-C 13W/4P	87	175	0.95
13	FBH032 2xPL-C/4P18W EL WH	PL-C 18W/4P	87	175	0.95
14	FBH033 2xPL-C/4P18W EL WH	PL-C 18W/4P	130	245	1.06
15	FBH033 2xPL-C/4P26W EL WH	PL-C 26W/4P	130	245	1.06
16	FBH030 1xPL-C/4P10W EL WH FG	PL-C 10W/4P	92	133	0.78
17	FBH031 1xPL-C/4P13W EL WH FG	PL-C 13W/4P	91	160	0.87
18	FBH031 1xPL-C/4P18W EL WH FG	PL-C 18W/4P	91	160	0.87
19	FBH031 2xPL-C/4P13W EL WH FG	PL-C 13W/4P	91	160	0.89
20	FBH032 1xPL-C/4P18W EL WH FG	PL-C 18W/4P	87	175	1.07
21	FBH032 2xPL-C/4P13W EL WH FG	PL-C 13W/4P	87	175	1.07
22	FBH032 2xPL-C/4P18W EL WH FG	PL-C 18W/4P	87	175	1.07
23	FBH033 2xPL-C/4P18W EL WH FG	PL-C 18W/4P	130	245	1.32

